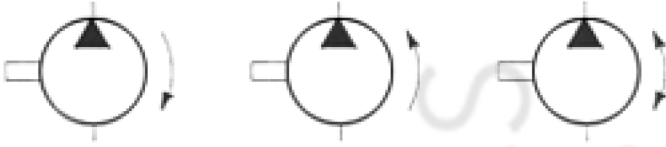


Motor & Pump Symbols



Electric Motor



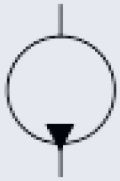
Fixed Displacement Pump, single direction of flow, internal case drain (from left to right: clockwise rotation, anti-clockwise rotation and bi-directional rotation)



Combustion Engine



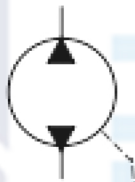
Variable Displacement Pump, external case drain (from left to right: single flow direction, two flow direction)



Hydraulic Motor:
fixed displacement, single direction of flow / rotation, internal case drain...



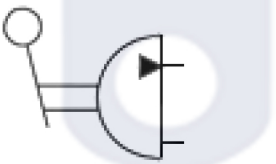
... now showing:
two directions
of flow / rotation.



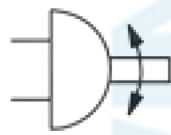
... now showing:
external case
drain.



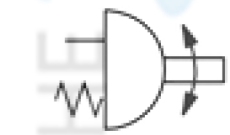
... now showing:
variable
displacement.



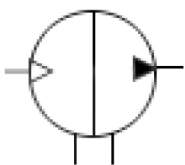
Lever operated
hand pump
(limited angle)



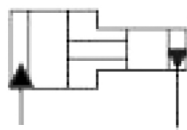
Double-acting
rotary actuator
(limited angle)



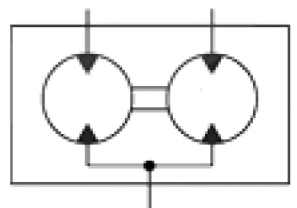
Single-acting,
spring return
rotary actuator
(limited angle)



Continuous
action air-hydraulic
pressure intensifier



Single-acting
hydraulic pressure
intensifier



Rotary flow
divider