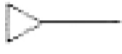


Other Basic Symbols



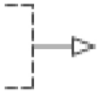
Pneumatic energy source (gas energy)



Hydraulic energy source (liquid energy)



Permanent magnet



Port exhausting to atmosphere



Exhaust to atmosphere



Three-way rotary connection (3 way)



Spring



Adjustable spring



Pre-set stroke limiter



Adjustable stroke limiter



Lockable



Pressure switch



Pressure transducer (analogue)



Electronic pressure switch



Pressure gauge



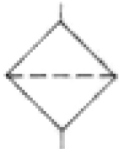
Temperature gauge



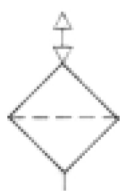
Flow meter



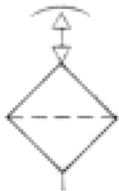
Top: isolation valve (open for normal circuit)
Bottom: isolation valve (closed for normal circuit operation)



Filter



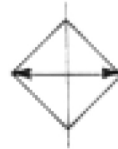
Air Breather



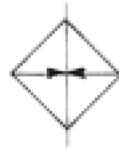
Filler-Breather



Dryer



Cooler



Heater