

Valve Symbols - Page 1



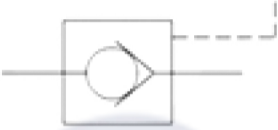
Check valve
(non-return valve)



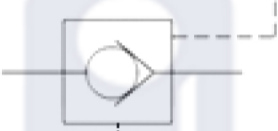
Spring rating
important



Adjustable flow control
valve



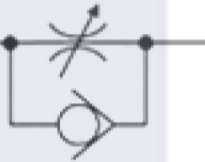
Pilot-to-open check valve
(3 port)



Pilot-to-open check valve
(4 port or "vented")



Shuttle valve



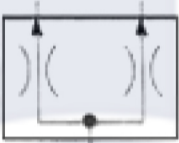
Throttle-check valve



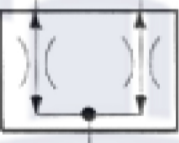
Pressure compensated
flow control valve



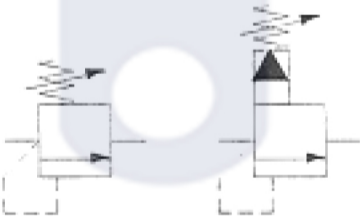
Priority flow control
valve (priority flow
divider)



Flow divider (spool type)



Flow divider / combiner
(spool type)



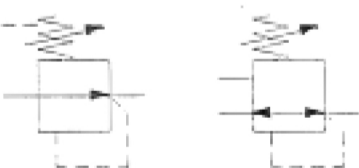
Pressure relief
valve: direct
operated,
internal drain...

... now
showing:
pilot operated



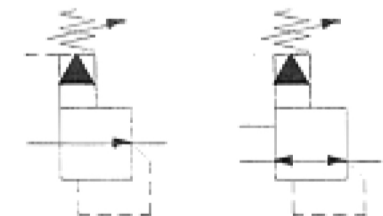
... now
showing:
external drain

... now
showing:
external control
(unload or "vent")



Pressure
reducing valve:
direct operated...

... now
showing:
3-way
function



Pressure
reducing valve:
pilot operated...

... now
showing:
3-way
function