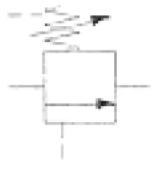


Valve Symbols - Page 2



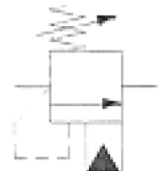
Pressure sequence valve: direct operated, internal pilot, external drain...



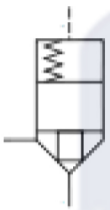
... now showing: external pilot



... now showing: internal drain



Overcentre valve (counter-balance valve)



Directional control valve cartridge: small seat area...



... now showing: large seat area



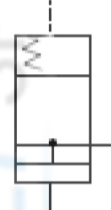
... now showing: the poppet having a throttling effect (damping nose)



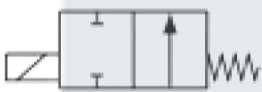
Pressure control valve cartridge: poppet type, normally closed...



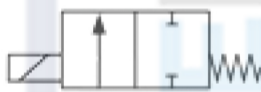
... now showing: spool type



... now showing: normally open



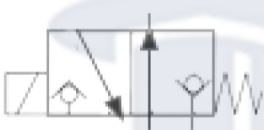
Directional control valve: direct operated, 2 port & 2 positions, solenoid operated, spring return, normally open...



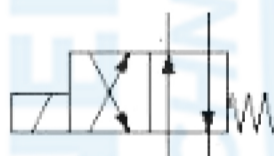
... now showing: normally closed and permissible bi-directional flow



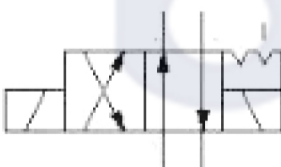
... now showing: 3/2 configuration



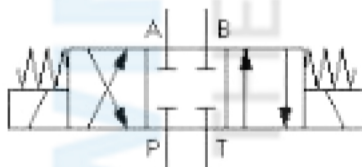
... now showing: leak free closures (poppet valve)



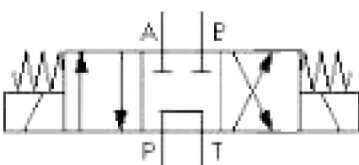
... now showing: 4/2 configuration



... now showing: detents ("stay-put" operation)



4/3 direct operated directional control valve: solenoid operated, spring centered, all ports closed in neutral...



... now showing: P-T in neutral